



Product Profile



VISION

To be the Preferred Provider of Affordable Housing and Building Solutions in the Region

MISSION

To Transform Life by Providing Efficient, Timely, Affordable & Innovative Housing and Building Solutions through Strategic Partnerships

OUR CORE VALUES

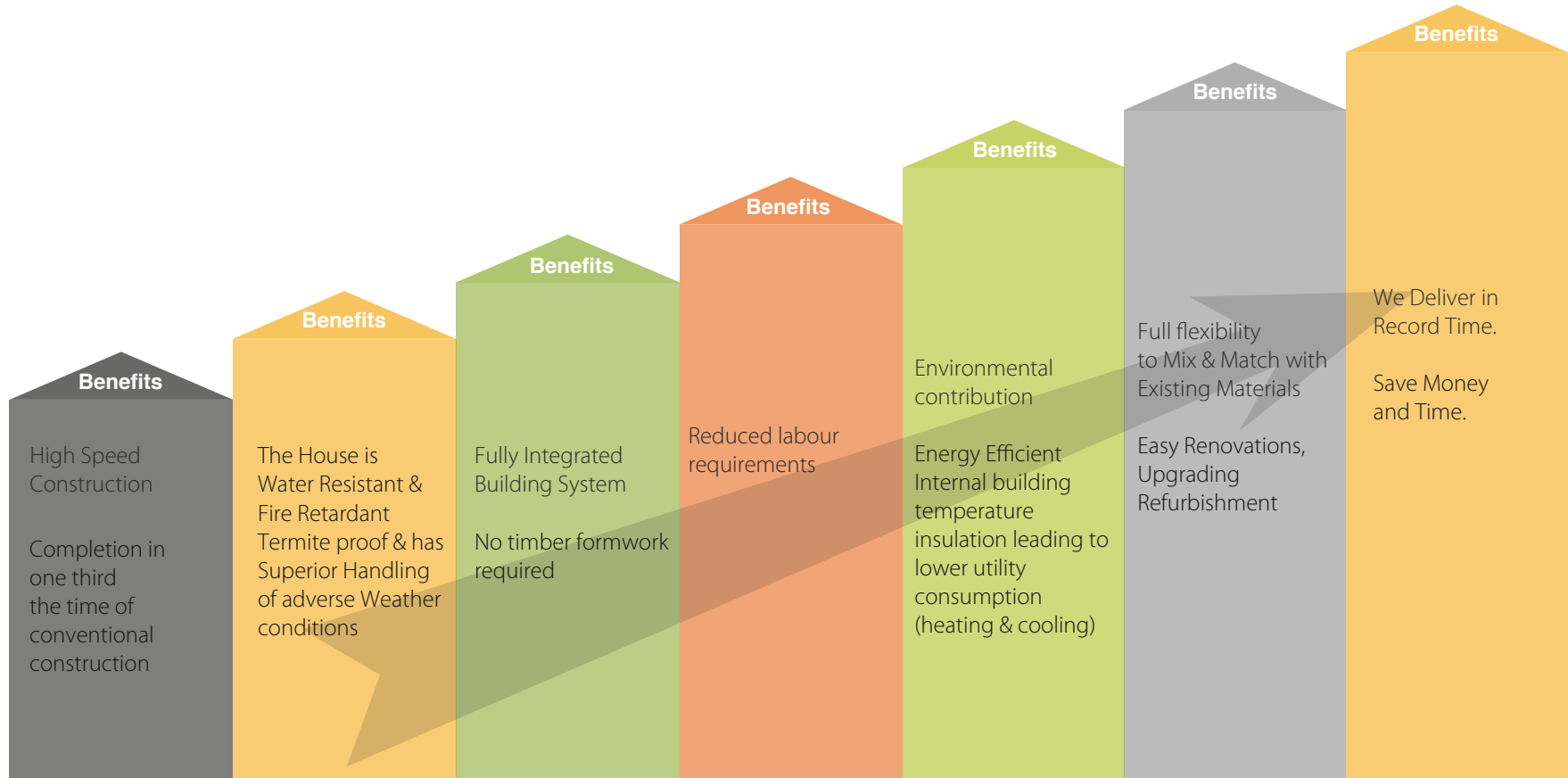
Passion | Simplicity | Collaboration | Integrity | Innovation | Excellence

KOTO Housing Kenya was established in 2014 as a provider of affordable housing and building solutions using alternative building technology. KOTO Housing Kenya is a licensee of KOTO CORP (Malaysia). KOTO Housing Kenya hopes to contribute to alleviating the housing deficiency in Kenya, through speedy delivery of houses and buildings. In particular we intend to support construction of houses, schools, and dispensaries among other building structures by intervening in the key areas of Housing, Education and Health through delivery of high quality and affordable buildings.

“We will Transform Life
for a Better Tomorrow”

Our Solution

KOTO Building Solution offers an extremely rapid, simple, efficient, environmentally friendly and affordable construction solution that can be deployed anywhere in the country while generating massive employment opportunities for the Kenyans.



- *Commercial Projects*
- *Apartment Blocks*
- *Schools*
- *Hospitals*
- *Residential Units Etc.*

We Also Sell Panels To Clients Who Wish To Self-build.

KOTO
HOME
DESIGNS

ROTUNDU (2 BEDROOM BUNGALOW WITH 2 BATHROOMS)

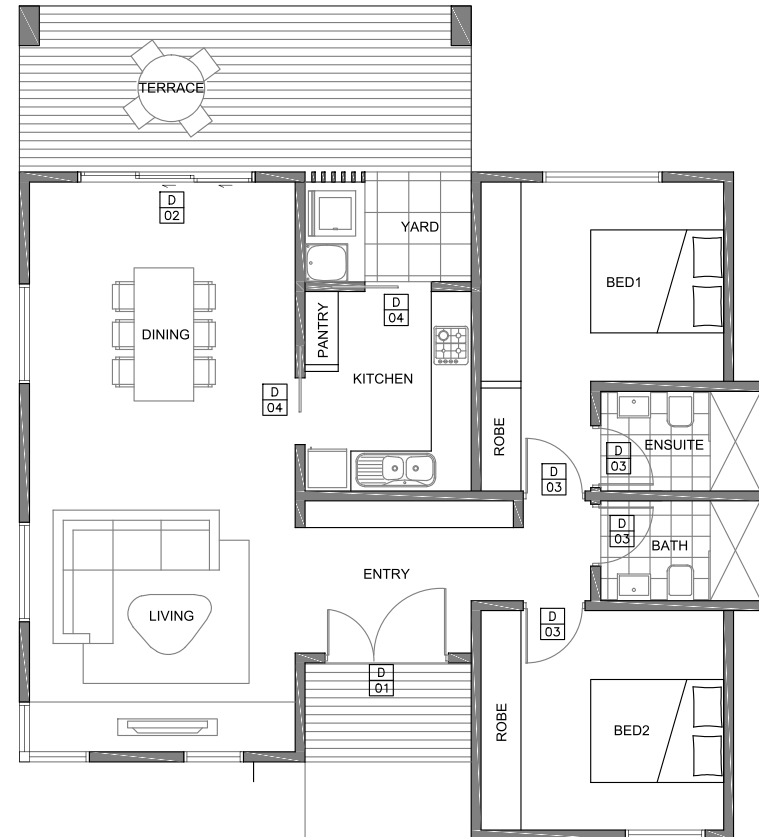


FRONT VIEW PERSPECTIVE

Kshs 3.0 Million

GROUND FLOOR PLAN

INTERNAL FLOOR AREA = 85m²



KIBO (2 BEDROOM BUNGALOW WITH 2 BATHROOMS)

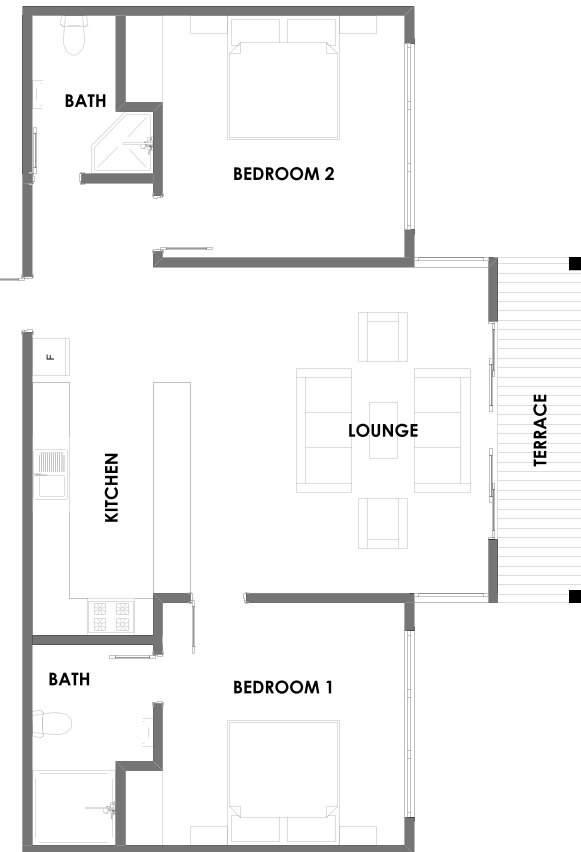


FRONT VIEW PERSPECTIVE

Kshs 3.2 Million

GROUND FLOOR PLAN

INTERNAL FLOOR AREA = 90m²



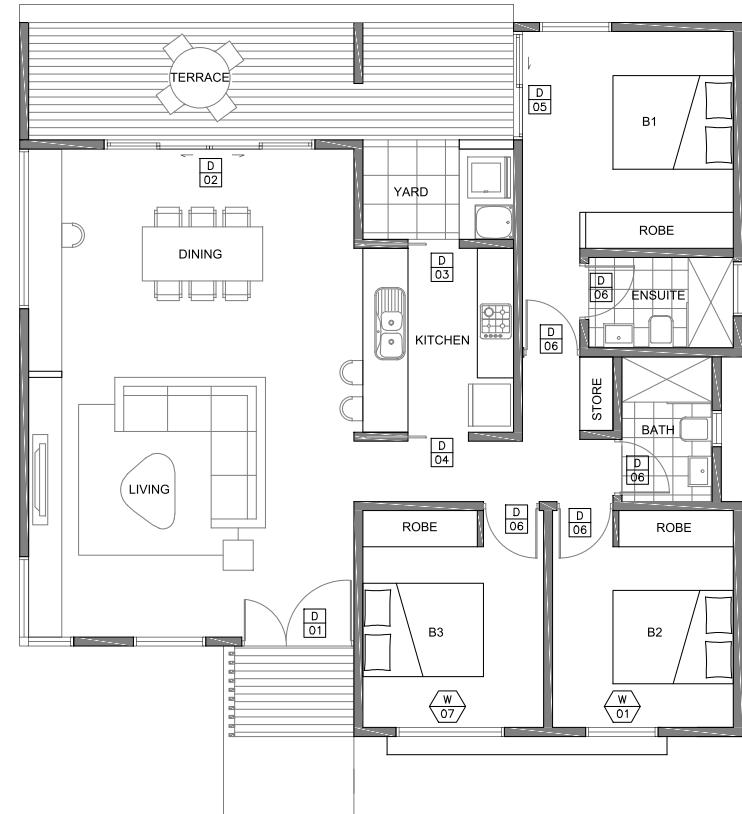
KOROSI (3 BEDROOM BUNGALOW WITH 2 BATHROOMS)



FRONT VIEW PERSPECTIVE

Kshs 3.5 Million

GROUND FLOOR PLAN
INTERNAL FLOOR AREA = 105m²



LOLEZA (3 BEDROOM BUNGALOW WITH 2 BATHROOMS)



FRONT VIEW PERSPECTIVE

Kshs 5.0 Million

GROUND FLOOR PLAN

TOTAL INTERNAL FLOOR AREA = 140m²



LENGAI (3 BEDROOM BUNGALOW WITH 3 BATHROOMS)



FRONT VIEW PERSPECTIVE

Kshs 5.5 Million

GROUND FLOOR PLAN

TOTAL INTERNAL FLOOR AREA = 150m²



KADAM (3 BEDROOM BUNGALOW WITH 4 BATHROOMS)



FRONT VIEW PERSPECTIVE

Kshs 6.3 Million

GROUND FLOOR PLAN

TOTAL INTERNAL FLOOR AREA = 163m²



ZULIA (4 BEDROOM MAISONETTE WITH 3 BATHROOMS)

KOTO
Housing Kenya

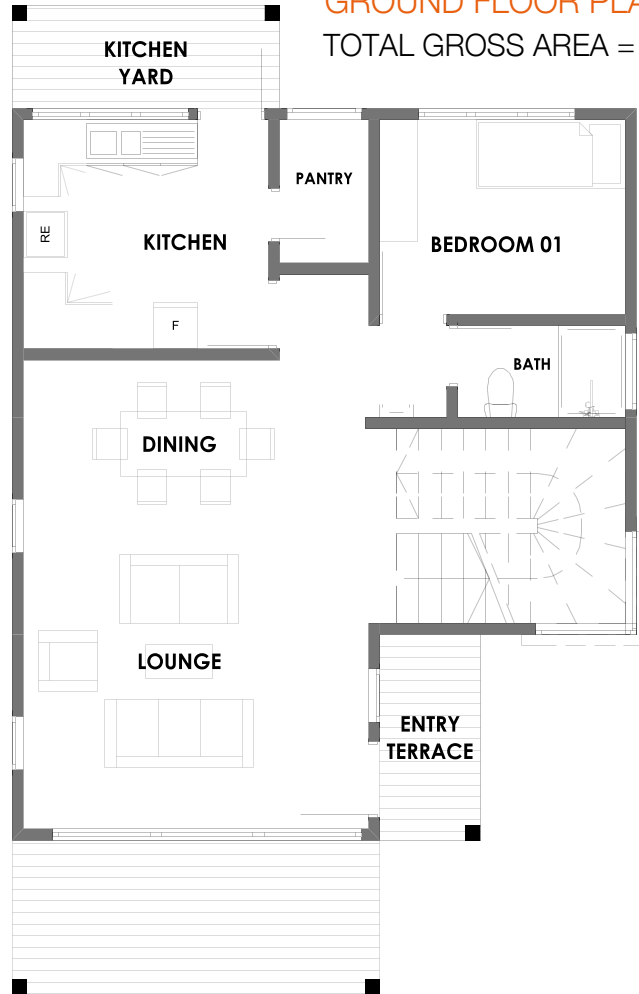


FRONT VIEW PERSPECTIVE

Kshs 5.5 Million

ZULIA (4 BEDROOM MAISONNETTE WITH 3 BATHROOMS)

GROUND FLOOR PLAN
TOTAL GROSS AREA = 150m²



FIRST FLOOR PLAN



MTELO (3 BEDROOM MAISONETTE WITH 3 BATHROOMS)



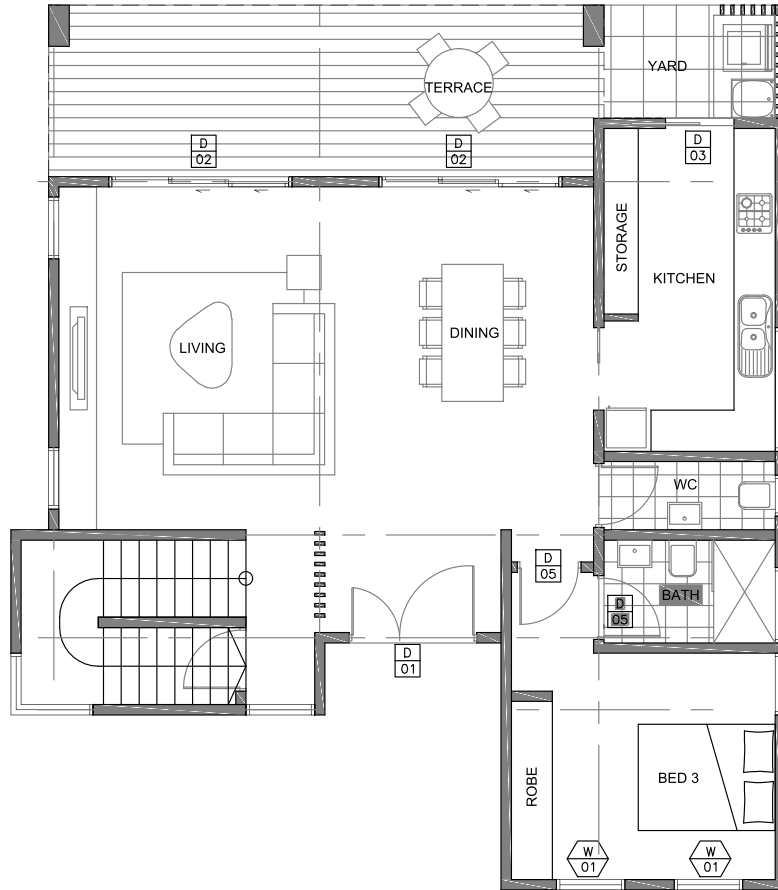
FRONT VIEW PERSPECTIVE

Kshs 5.6 Million

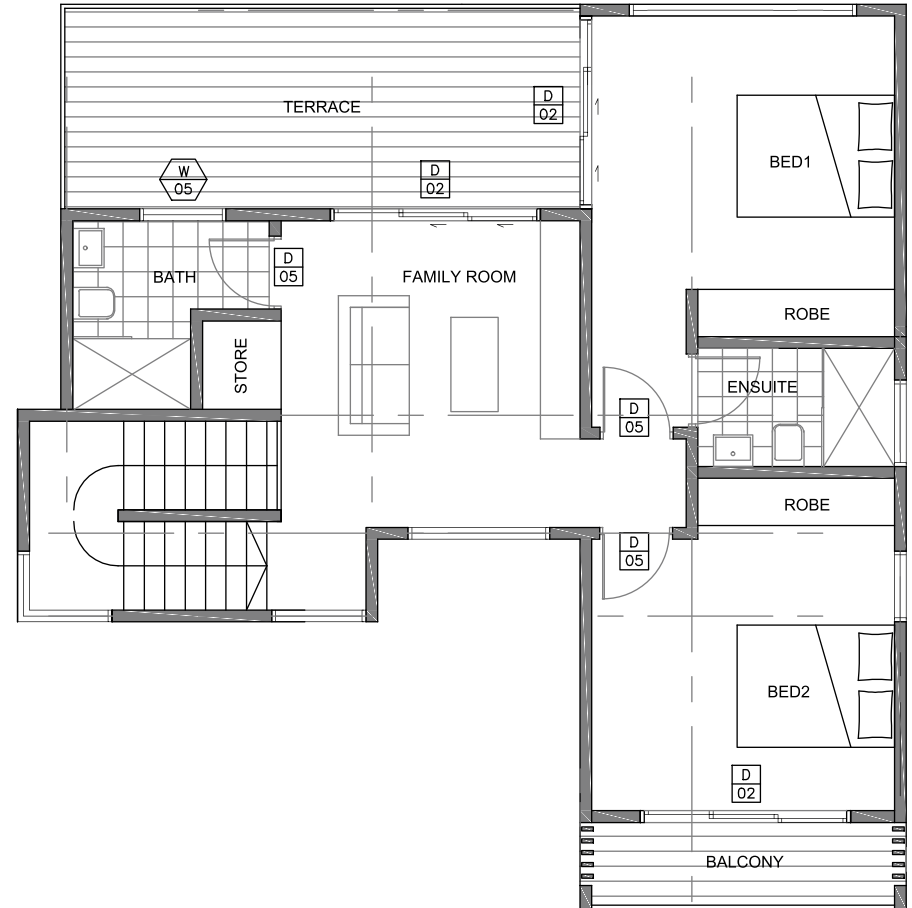
MTELO (3 BEDROOM MAISONETTE WITH 3 BATHROOMS)

GROUND FLOOR PLAN

TOTAL INTERNAL FLOOR AREA = 155m²



FIRST FLOOR PLAN



LESATIMA (4 BEDROOM MAISONETTE WITH 3 BATHROOMS)



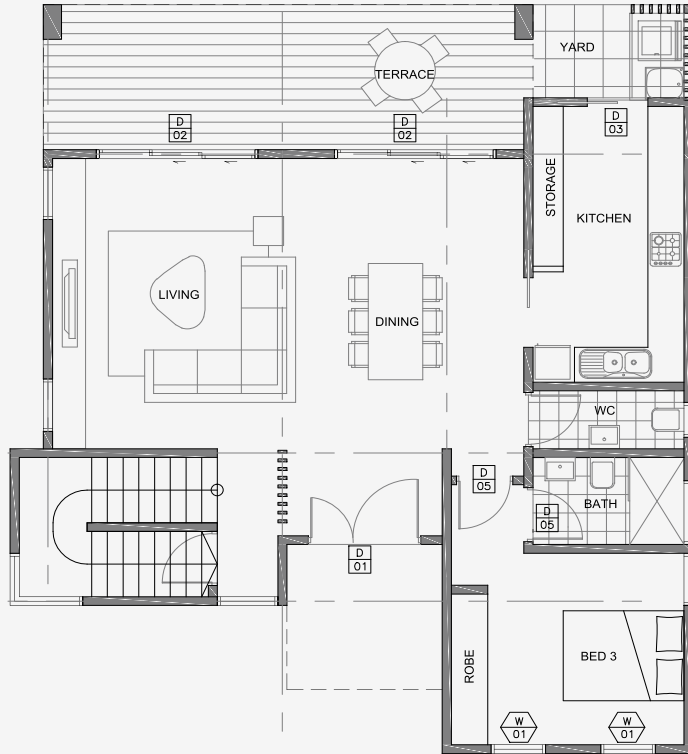
FRONT VIEW PERSPECTIVE

Kshs 6.4 Million

LESATIMA (4 BEDROOM MAISONETTE WITH 3 BATHROOMS)

GROUND FLOOR PLAN

TOTAL INTERNAL FLOOR AREA = 175m²



FIRST FLOOR PLAN



WATI (4 BEDROOM MAISONETTE WITH 2 BATHROOMS + DSQ)

KOTO
Housing Kenya



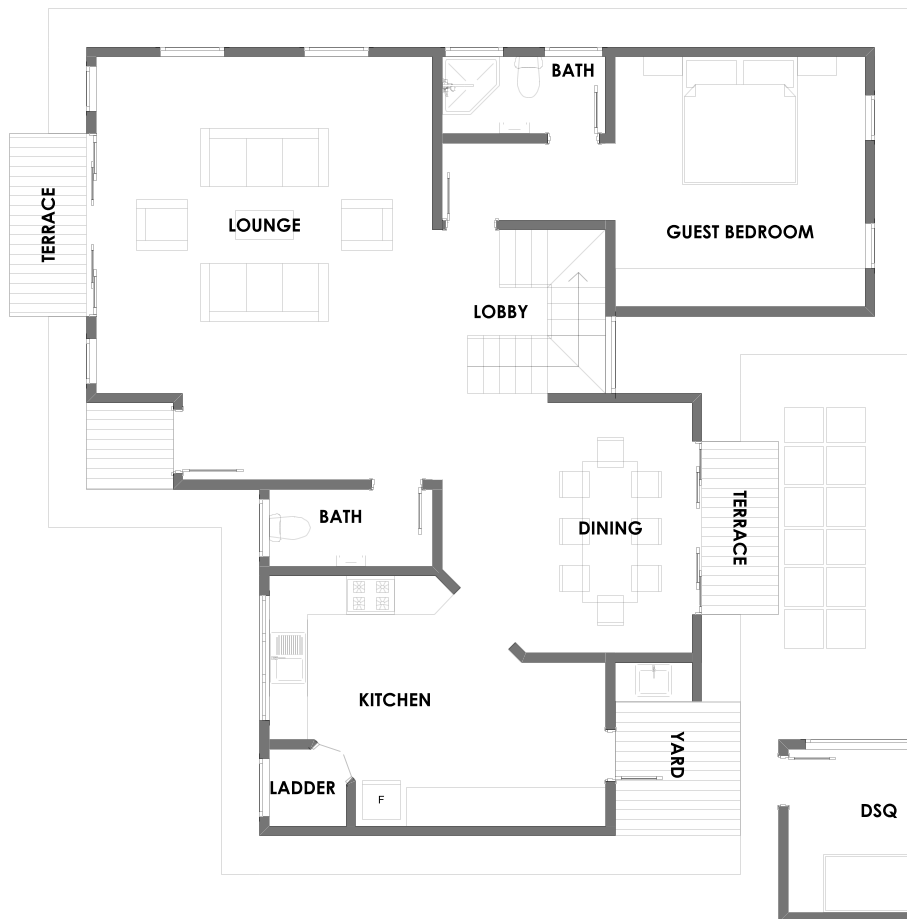
FRONT VIEW PERSPECTIVE

Kshs 7.0 Million

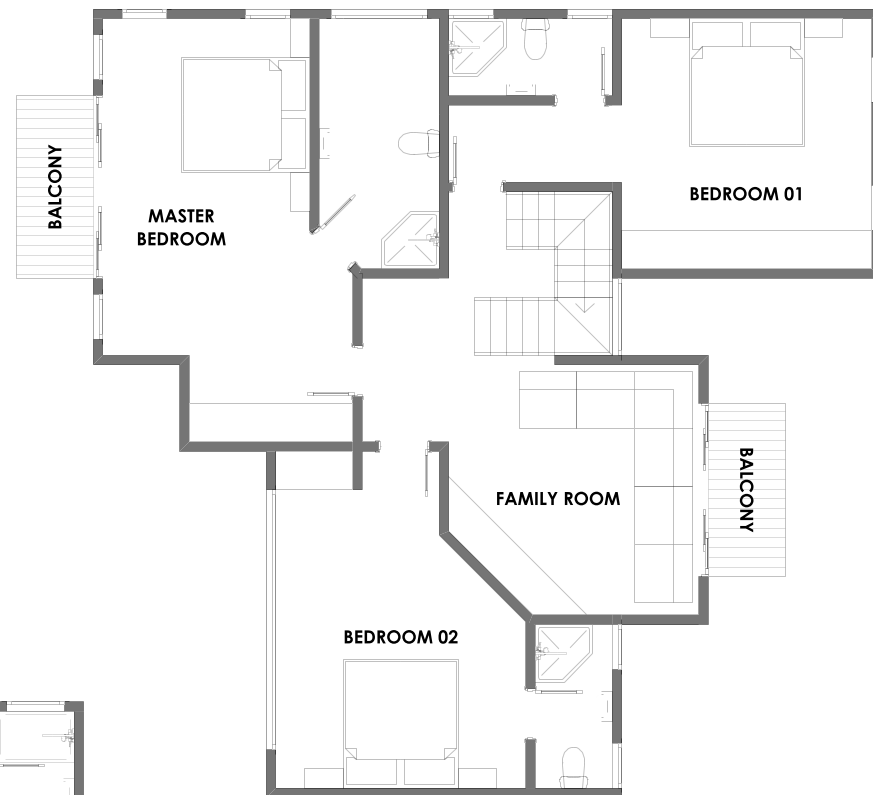
WATI (4 BEDROOM MAISONETTE WITH 2 BATHROOMS + DSQ)

GROUND FLOOR PLAN

BUILD UP AREA = 190m2



FIRST FLOOR PLAN



KILIMANJARO (5 BEDROOM MAISONETTE WITH 5 BATHROOMS)



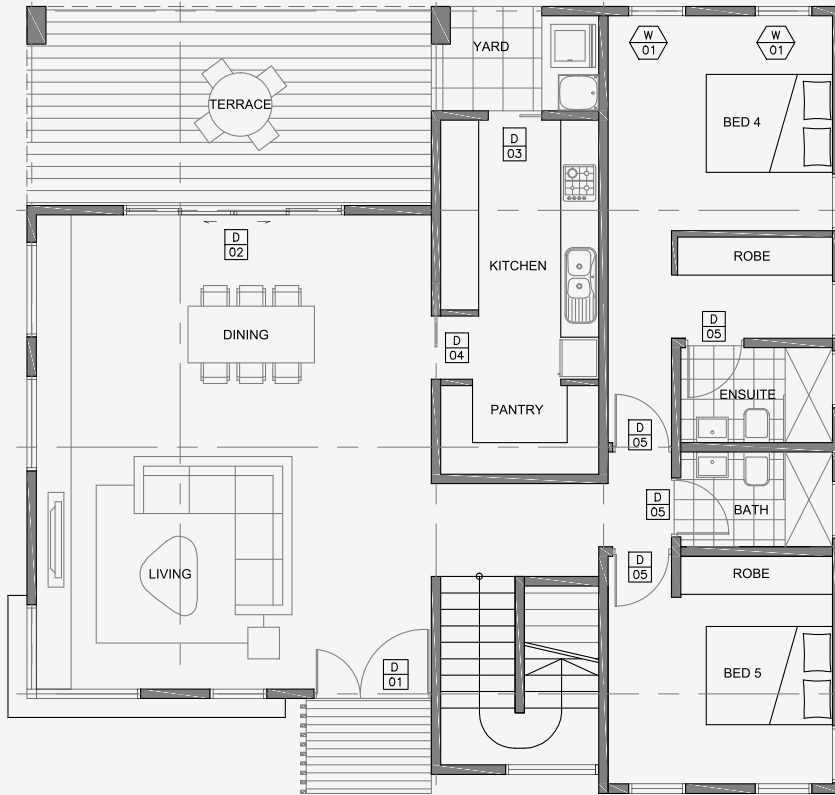
FRONT VIEW PERSPECTIVE

Kshs 8.5 Million

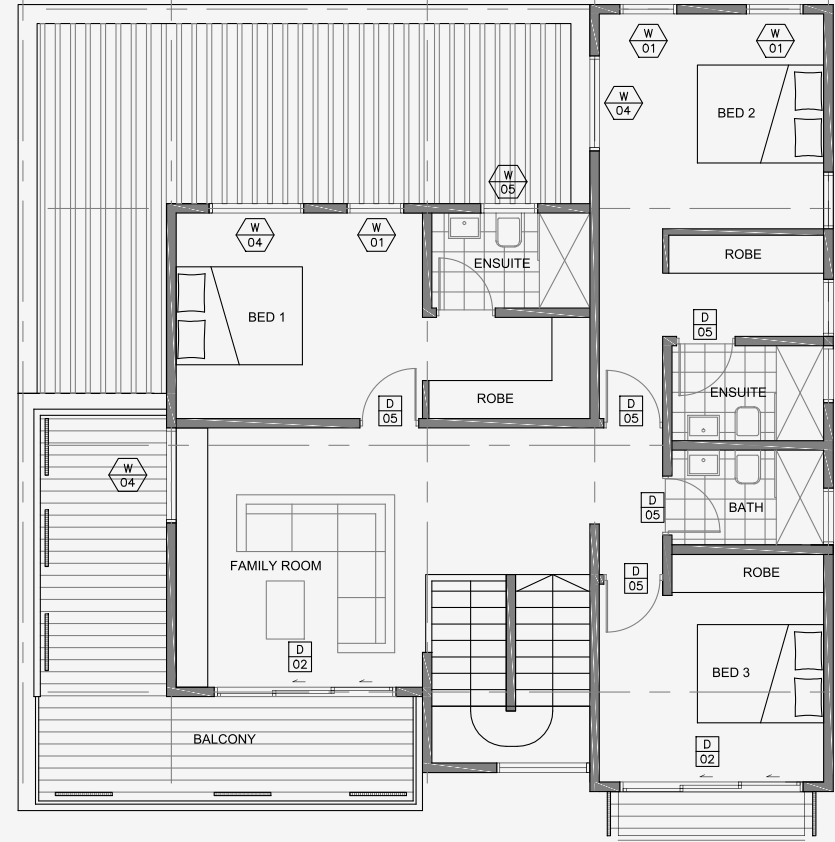
KILIMANJARO (5 BEDROOM MAISONETTE WITH 5 BATHROOMS)

GROUND FLOOR PLAN

TOTAL INTERNAL FLOOR AREA = 215m²



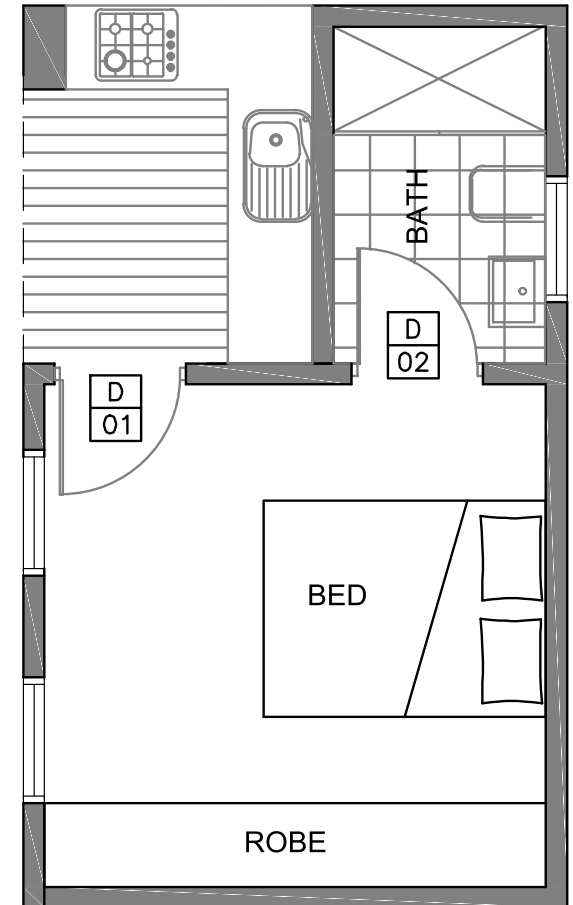
FIRST FLOOR PLAN



DSQ (1 BEDROOM WITH 1 BATHROOM)

GROUND FLOOR PLAN

TOTAL INTERNAL FLOOR AREA = 16m²



FRONT VIEW PERSPECTIVE

Kshs 490,000 Thousand

STANDARD FEATURES OF A KOTO HOUSE



KITCHEN: A fully fitted kitchen without appliances.

SANITARY FITTINGS: Good quality ceramic sanitary fittings.

TILING: Carefully selected quality tiles with an option of colours.

1000 litre **WATER STORAGE** tank.

Fully fitted **QUALITY WARDROBES**.

TERMS AND CONDITIONS

- * Quoted price of the house includes all transportation costs within radius of 50Km from our offices.*
- * Quoted price of the house does not include cost of perimeter wall, electricity and water connectivity; and approval of building plans.*
- * Quoted house prices are based on normal soil conditions and a flat surface. Particulars not warranted.*
- * Quoted prices are EXCLUSIVE of 16% VAT*
- *Particulars not warranted.*

Standard Process

- Complete the KOTO House Application form.
- Pay the required commitment fees and receive building plans.
N/B this fee is included in the price of the house.
- Obtain statutory building permits from your county.
- Pay balance of the house price.
- KOTO Housing Kenya Limited builds your chosen house.

Terms and conditions apply



Koto House Mombasa Road,
Mlolongo, Machakos County.
P.O.Box 52494-00200
Nairobi, Kenya
Cell: +254 789 80 89 91
+254 772 12 44 08

Email: info@kotohousingkenya.co.ke
www.kotohousingkenya.co.ke